

The Power of Illumination

www.bplust.com



General Specifications

- ✓ Compact metal casing, rectangular or round
- ✓ Maximum load: 300W
- ✓ Dimmable 0 – 100%
- ✓ Minimum load: 0W without dimmer; 90W with dimmer
- ✓ Input 120V 50/60Hz
- ✓ AC output, available for 12V or 24V lamps
- ✓ Short circuit protection with safety power-down reset
- ✓ Over load protection with safety power-down reset
- ✓ Power factor > 0.98
- ✓ THD < 13%
- ✓ Operating frequency > 20kHz
- ✓ Available in Class A and Class B insulation systems
- ✓ Input wire gauge: 18 AWG
- ✓ Output wire gauge: 12 AWG
- ✓ Operate with regular incandescent dimmers or architectural type dimmer
- ✓ Available RFI filtering

FX 300 300W Electronic Transformer

The FX 300 is a high capacity transformer designed to deliver power to a maximum of 300 Watts of total lamp load noiselessly.

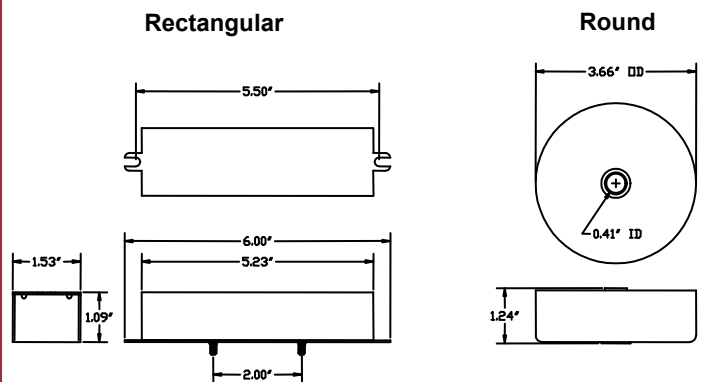
The advanced circuitry of the FX 300 enables it to operate with regular incandescent dimmer as well as architectural type dimming controls, without using an interface. All FX 300 transformers have infinite dimming range from 0 to 100%.

All FX 300 transformers feature short circuit and overload protection with power-down reset for added safety and protection. They come in compact metal casing and are available in flush mount, stud mount, and round format to suit your mounting configuration requirements.

Other available features include Class B insulation system and RFI filtering.

The FX 300 transformer offers the right combination of features to meet the requirements of your most demanding applications. Contact your B+L customer service representatives to find out more about this and many other fine products.

Dimensions



Dimensions for unit
with stud mounting



1-800-361-1400



Ordering Information

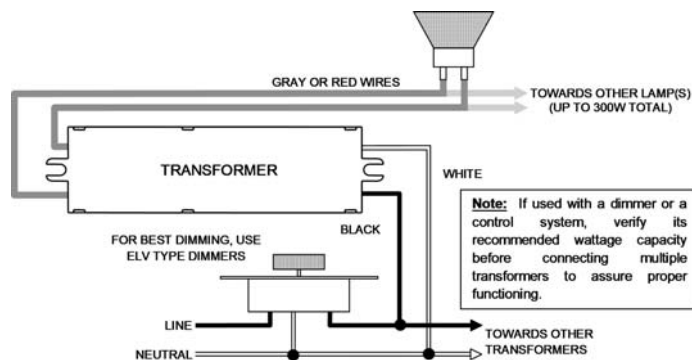
300 WATT 120VAC 50/60 Hz Input

MODEL NO.	LAMPS	CASING	INSULATION CLASS	RFI	MAX AMBIENT OP. TEMP.	OVERLOAD PROTECTION	SHORT CIRCUIT PROTECTION
FX97311B	12V	R	B	NO	50°C	YES	YES
FX97312B	24V	R	B	NO	55°C	YES	YES
FX97313B	12V	RS	B	NO	50°C	YES	YES
FX97314B	24V	RS	B	NO	55°C	YES	YES
FX97315B	12V	RD	B	NO	50°C	YES	YES
FX97316B	24V	RD	B	NO	55°C	YES	YES

Casing format: R = Rectangular Flush mount; RS = Rectangular Stud Mount; RD = Round

Note: For RFI filtering option, add -R suffix to part number

Cabling Diagrams



Warranty

2 years from delivery date for:
FX 300 Transformers

175 Lewis Rd, Ste 20
San Jose, CA 95111
USA

Tel.: (408) 269-7884
(800) 361-1400

Fax.: (408) 269-7638

www.bplusl.com
sales@bplusl.com

